

NexES Special Stains Specifications

General Characteristics

Capability	Special Stains slide processing
Slide Carousel	1-20 slides
Reagent Carousel	25 reagent positions
Slides	25 x 75 mm, 1 x 3 inches, or 26 x 76 mm Superfrost Plus
Modularity	1-8 NexES Special Stains systems may be controlled from one PC
Water Quality	NCCLS Type II water or equivalent (referred to as deionized water)
Bulk Fluids	2 bulk fluids
Configuration	Bench mounted with 20 liter waste bottle
Certifications	CSA and CE compliant

Temperature Control

Instrument Operational Temperature	37°C - 70°C
------------------------------------	-------------

Environmental Requirements

BTU Output	1700 BTU
Room Temperature	15° C to 30° C (59° F to 86° F). Note: The instrument may be unable to maintain proper reaction temperature if laboratory ambient temperature exceeds the specified maximum temperature.
Humidity	5% to 95%, non-condensing
Location	Flat, level surface. Remove from sources of direct heat and moisture. Bulk fluid module can be placed up to three feet above or below staining module.

Electrical Characteristics

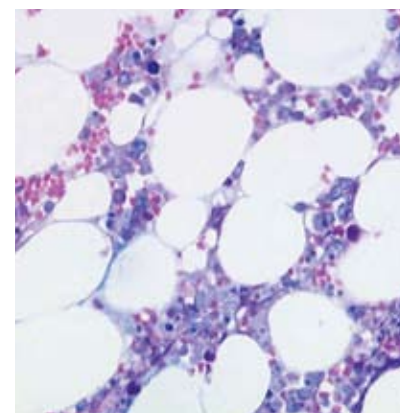
	U.S.	Japan	Europe
Staining Module	SM #850-000	SM #850-000	SM #850-010
Bulk Fluid Module	BFM #850-001	BFM #850-021	BFM #850-011
Voltage	120 VAC ±10%	100 VAC ±10%	230 VAC ±10%
Current	8 Amps	8 Amps	5 Amps
Frequency	60 Hz	50 Hz	50 Hz
Power Connection	Cord suited to country. For U.S., standard 3-prong grounded		

Physical Characteristics

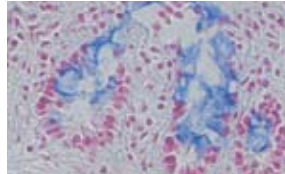
	Staining Module (SM)	Bulk Fluid Module (BFM)
Size (W x D x H):	16" x 20" x 13.5" (40.5 cm x 51 cm x 34 cm)	13.5" x 14.5" x 13.5" (34 cm x 37 cm x 34 cm)
Weight	40 lbs (18 kg)	30 lbs (13.6 kg)
Clearances	Top 15" (38.1 cm) Sides 4" (10.2 cm) Rear 6" (15.2 cm)	



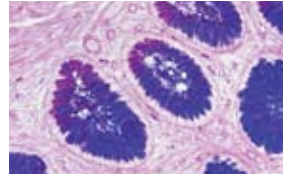
NexES Special Stains



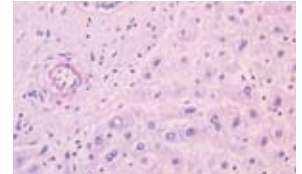
Giemsa (860-006)



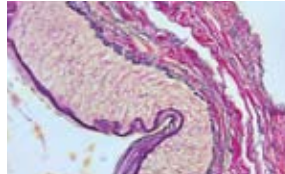
Alcian Blue (860-002)



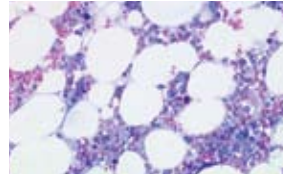
PAS Alcian Blue (860-003)



PAS Diastase (860-004)



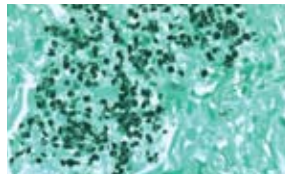
Elastic (860-005)



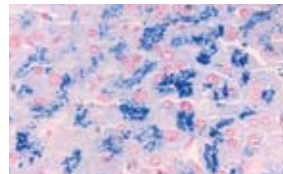
Giemsa (860-007)



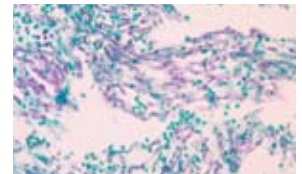
GMS II Fungus (860-028)



GMS II Pneumocystis (860-028)



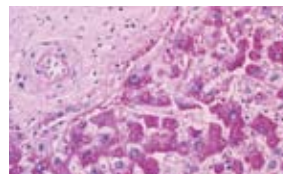
Iron (860-009)



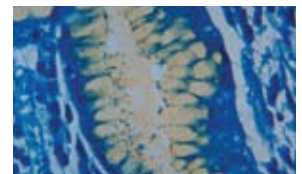
PAS Lt Green (860-010)



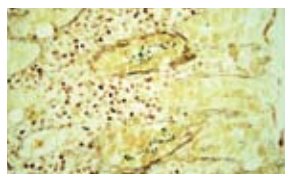
Mucicarmine (860-011)



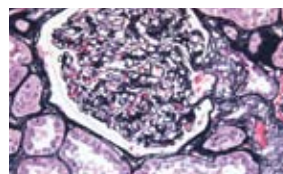
PAS (860-014)



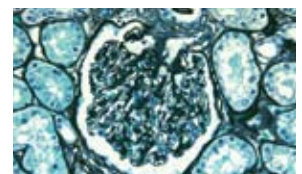
Alcian Yellow (860-017)



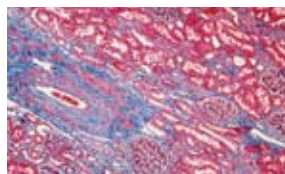
Steiner (860-018)



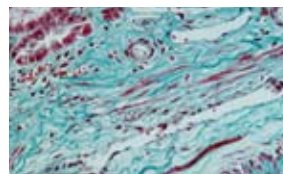
Jones (860-019)



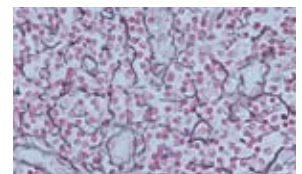
Jones Lt Green (860-020)



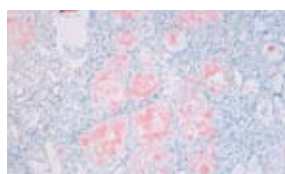
Trichrome Blue (860-022)



Trichrome Green (860-023)



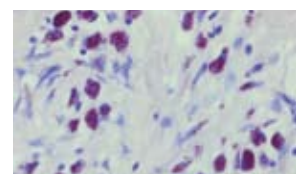
Reticulum (860-024)



Congo Red (860-026)



Congo Red (Polarized) (860-026)



AFB (860-027)

Ventana Medical Systems, Inc.
1910 E. Innovation Park Drive
Tucson, Arizona 85755
USA
+1 (520) 887 2155
(800) 227 2155

www.ventanamed.com

© 2009

VENTANA and NEXES are trademarks of Roche.
N721 0409C